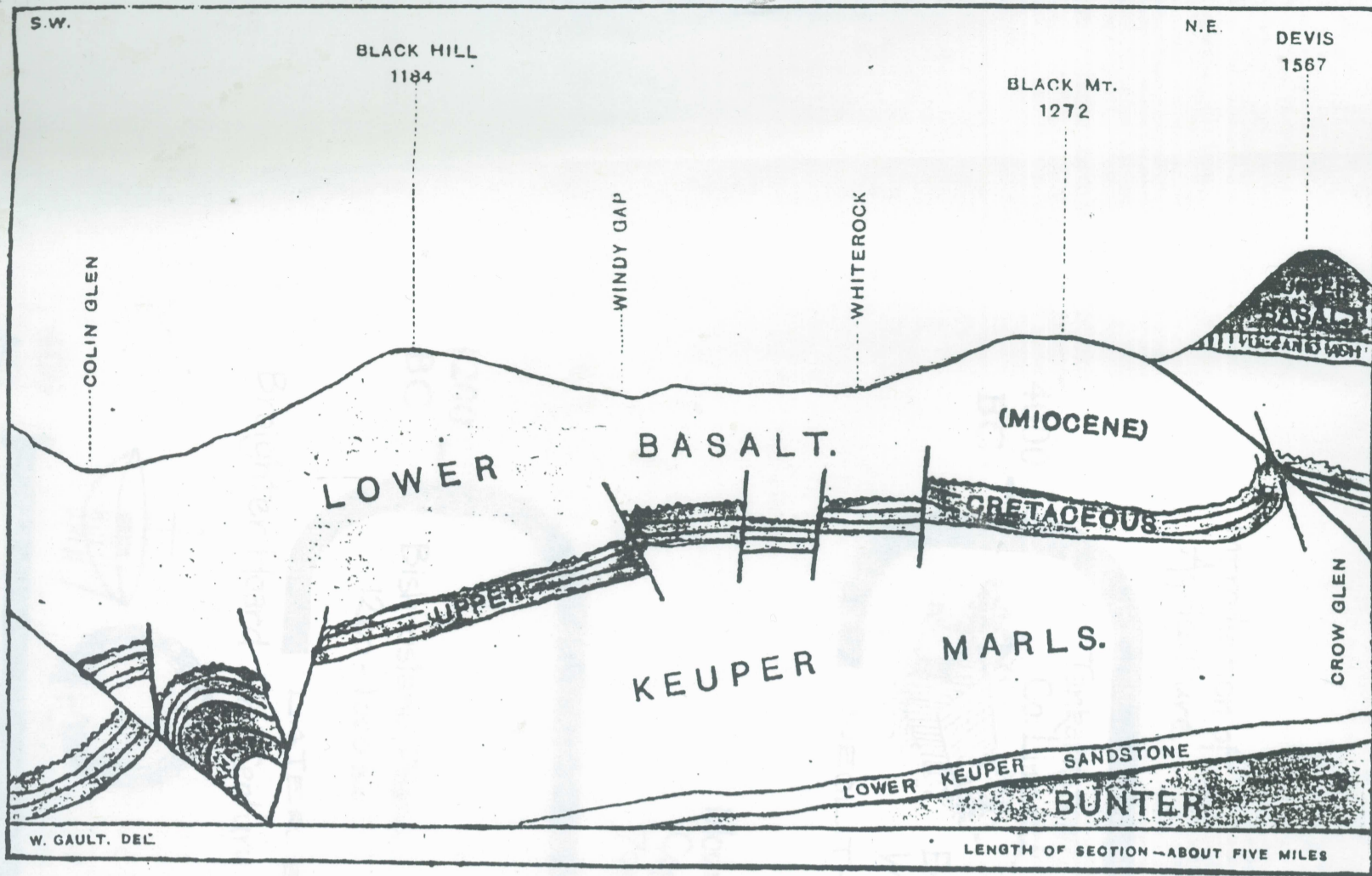


GEOLOGY OF BLACK MOUNTAIN, BELFAST.



SECTION FROM COLIN GLEN TO CROW GLEN.

CRETACEOUS ROCKS OF BLACK MOUNTAIN, BELFAST.

Sections showing succession of Strata, and thinning out of the Upper Greensand Beds to the North East.

SECTION AT COLIN GLEN.	SECTION AT THE ALLENS (WINDY GAP).	SECTION AT WHITEROCK.	SECTION AT CROW GLEN.
LOWER BASALT.	LOWER BASALT (Amygdaloidal)	LOWER BASALT.	LOWER BASALT.
1 Zone of the BELEMNITELLES.	Flint gravel.	1 Zone of the BELEMNITELLES.	1 Zone of the BELEMNITELLES.
2 Zone of MARSUPIITES.	Zone of the BELEMNITELLES.	2 Zone of Marsupites.	
3 Zone of M. Cor-Anguinum.	Tabular bed of Flint.	3 M. Cor-Anguinum.	
4 Callianassa Bed.		4 Ostrea Columba.	2 Tabular Flint.
4 Zone of OSTREA COLUMBA.	4 Ostrea Columba.	5 H. Sub-Globosus.	3 Micraster Cor-Anguinum.
4 Waldheima Hibernica.	5 H. Sub-Globosus.	6 Pecten Asper.	5 H. Sub-Globosus.
5 Zone of HOLASTER SUB-GLOBOSUS.	6 Pecten Asper.		6 Pecten Asper.
6 Zone of PECTEN ASPER.	KEUPER MARLS.	KEUPER MARLS.	KEUPER MARLS, with Gypsum Veins, and Bands of Sandstone Ripple Marked, &c., and with obscure footprints.
7 Ammonites Angulatus.	Mottled and Variegated.	Red and Green Mottled and Variegated.	
9 White Lias.	Bunter Sandstones.	Calcareous Sandstones.	
10 Avicula Contorta Beds.		Soft Red Sandstones.	
11 Bone Bed.			
KEUPER MARLS.			

W. GAULT, DEL.

SCALE OF THICKNESS-40 FEET TO 1 INCH.

- 1. Hard Chalk with flints.—Upper Chalk.
- 2. Chalk without flints.
- 3. Conglomerate and nodular bed of green-speckled chalk (mulatto stone).

Lower Chalk.

- 4. Light green sandstones.
- 5. Yellowish calcareous sandstones.
- 6. Dark green argillaceous sands.

Upper Greensand

- 7. Calcareous marls and grit.
- 8. Black shales.
- 9. Grey limestone.
- 10. Thin black shales.
- 11. Micaceous shales and sandstones.

Lower Lias.

Rhaetic Beds.

Waved lines denote unconformability.